

PART OF THE N.W. 1/4, SEC. 34, T.6N., R.1W., S.L.B. & M.

HIGHLAND ADDITION
AMENDED

BLOCKS 3 & 4

IN OGDEN CITY

SCALE 1" = 50'

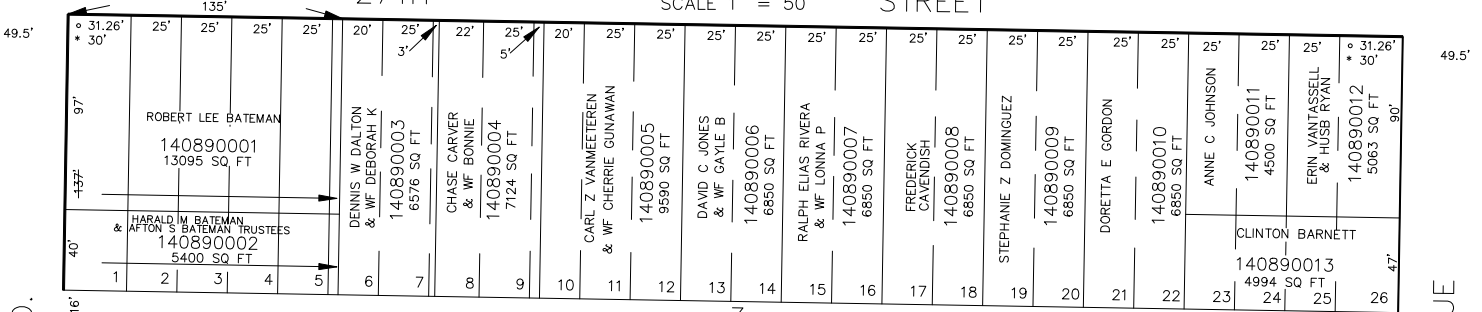
FOR COMPLETE ENG DATA SEE
ORIGINAL DEDICATION PLAT IN
BOOK 5, PAGE 1 OF RECORDS.

TAXING UNIT: 25

SEE BK. 2, PAGE 18

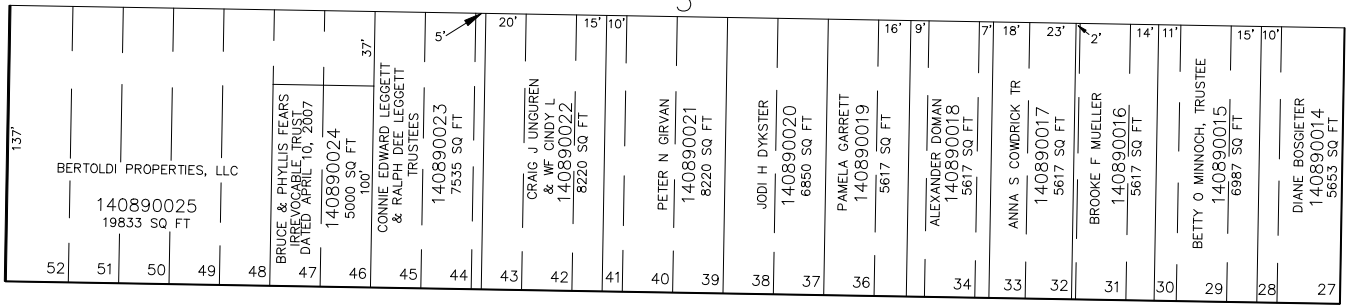
27TH

STREET



BLVD.

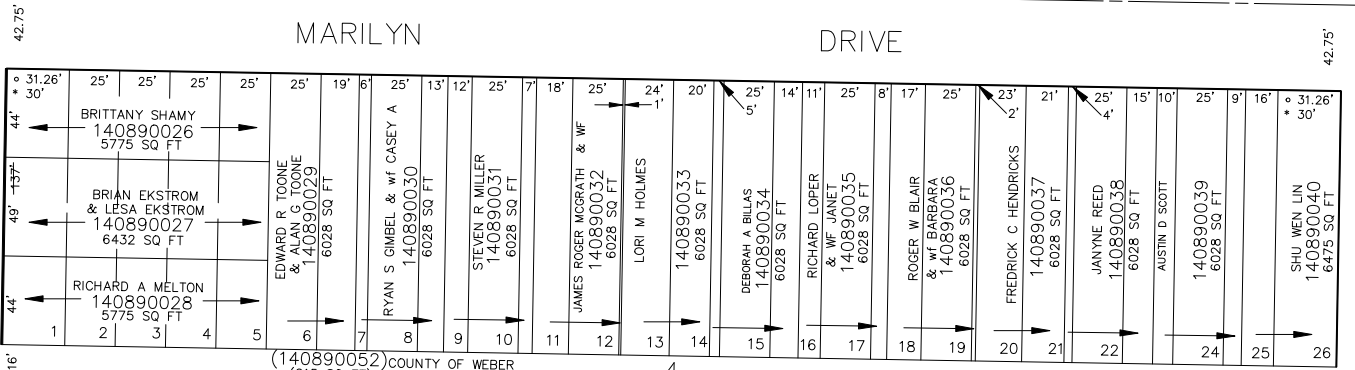
AVENUE



S 89'02" E

MARILYN

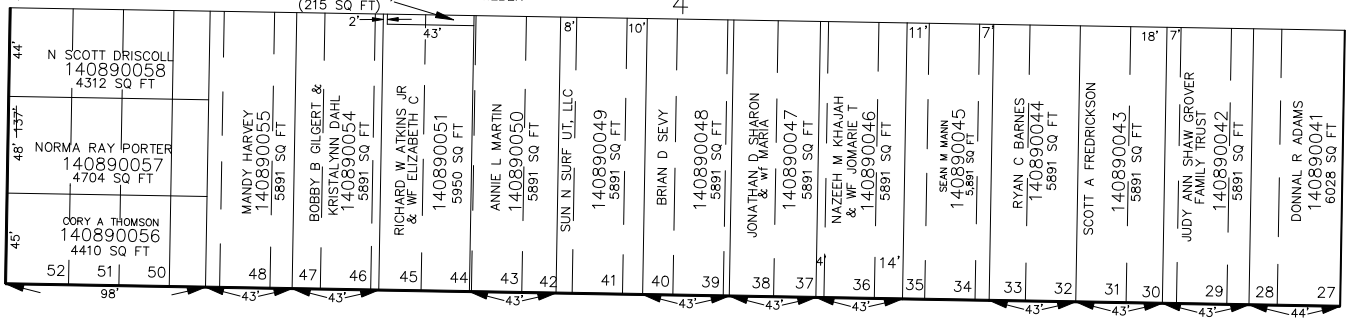
DRIVE



(140890052) COUNTY OF WEBER
(215 SQ FT)

HARRISON

TYLER



28TH

STREET

S 89'02" E

OGDEN CITY ENG. DEPT. PLATS
ORIG. DED. PLAT

SEE PAGE 90

BM 1-94

SEE BK. 2, PAGE 15

SEE PAGE 88